

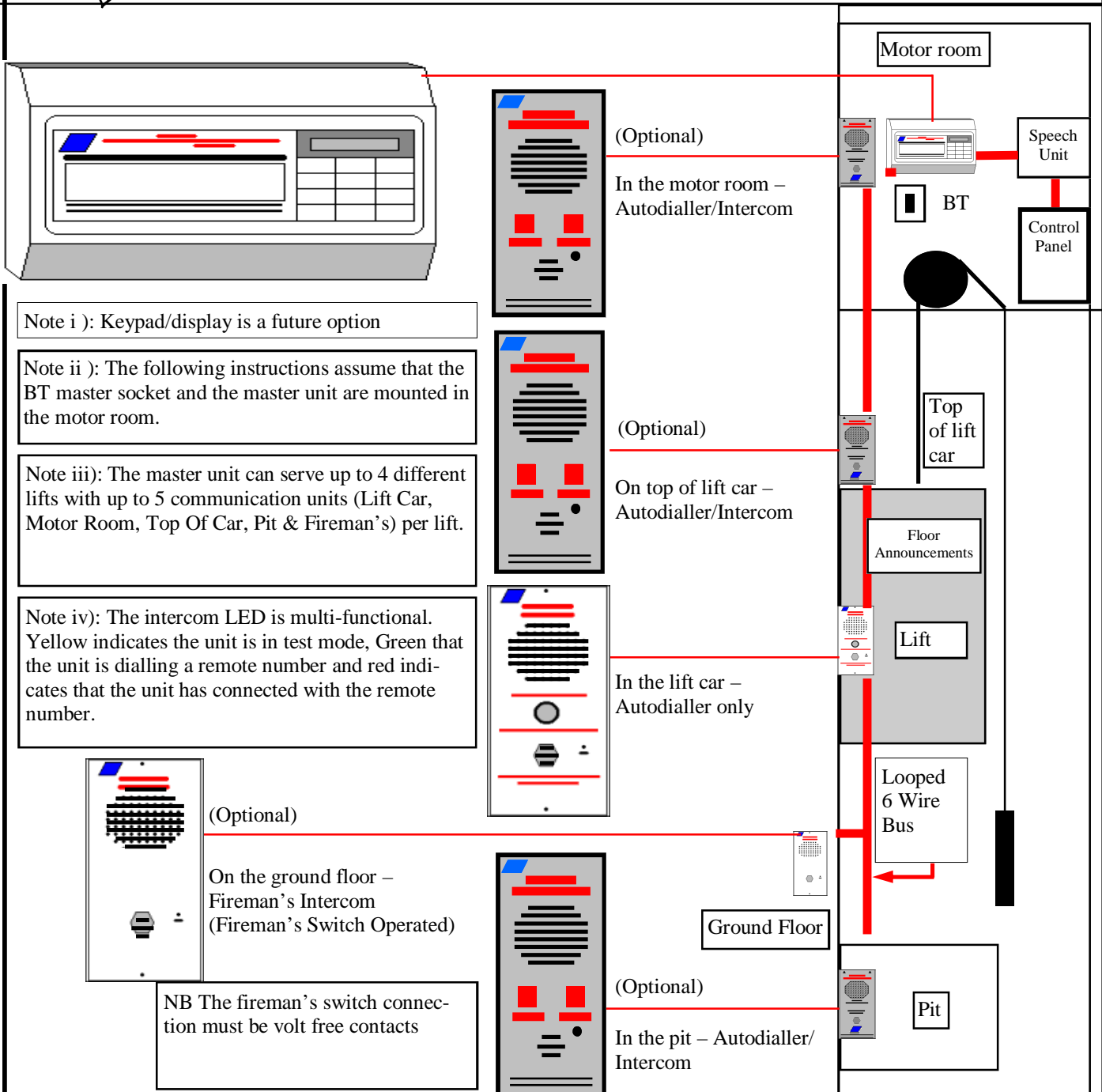


Six Wire Autodialler Installation instructions



IMPORTANT

Please read these instructions carefully prior to installation of the ACE 6 Wire Autodialler system



Version Number : 1	Drawn By : MB	Title : Six Wire Autodialler Installation Instructions
Version Date : 11/05/04		File : 485 Autodialler Installation Diagram With Speech.pub

Installing and Connecting Master Unit (Diagram 1)

- 1.) Find a suitable position for the master unit, close to the BT socket in the motor room.
- 2.) Fix Master Unit in position.
- 3.) Select a suitable position for the communication device in the motor room.
- 4.) Surface mount motor room communication unit at the chosen location.



Installing and Connecting the Communication Units (Diagrams 2, 3)

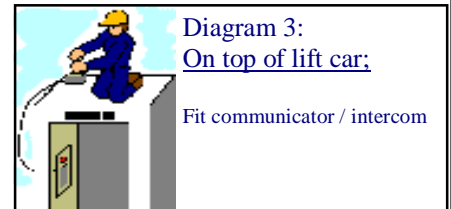
In the lift car

- 5.) Select a position for the Communication Unit (**4WSP-0x**) within the lift car. Pay careful attention to the position, so as to ensure accessibility for all passengers!
- 6.) Cut a hole 190mm x 90mm and 60mm deep in the Lift Car and fit Communication Unit.



On top of lift car (optional)

- 7.) Select a position for the communication device on-top of the lift car.
- 8.) Surface mount the communication intercom at the chosen location.



In the pit (optional)

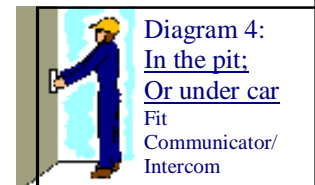
- 9.) Select a position for the communication intercom in the pit or under car (easier option).
- 10.) Surface mount the communication intercom at the chosen location.

On the ground floor (optional)

- 11.) Select a position for the Communication Unit on the ground floor. Pay careful attention to the position, so as to ensure easy access for Firemen!
- 12.) Cut a hole 190mm x 90mm and 60mm deep or surface mount and fit Communication Unit.

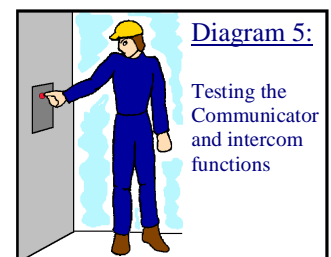
Connection (refer to connection diagram on following page)

- 13.) Connect motor room communication unit to the 6 wire loop in, loop out bus from the master unit, following instructions on the connection diagram provided.
- 14.) Run the 6 wire bus down to pit communication unit and connect, following the instructions on the connection diagram provided.
- 15.) Feed the 6 wire bus cable (trailing) down to top of lift car communication unit and connect to the master unit, following instructions on the connection diagram provided.
- 16.) Loop the top 6 wire bus down to lift car communication unit and connect to the master unit, following instructions on the connection diagram provided.
- 17.) OPTION – Loop in the ground floor communications unit from convenient point, up to the 6 wire bus from motor room to pit and connect, following instructions on the connection diagram provided.
- 19.) OPTION – Run the 2 wires from the Fireman's Switch (Volt free contacts) up to the motor room and connect to the master unit, following instructions on the connection diagram provided.
- 20.) Connect the BT type cable from the Master Unit to the telephone socket.
- 21.) Connect the 230V AC cable to a suitable supply, 2A max.



Testing The System (Diagram 5)

- 22.) Check all connections to ensure correct installation, and then power on the master unit.
- 23.) Test the autodialler by pressing and holding alarm button for more than 3 seconds – unit should dial pre-programmed telephone number.
- 24.) To check 2nd, 3rd, and 4th numbers, press button again whilst "ON" LED is lit. The unit will dial the next number in sequence after each button press.
- 25.) To extend talk time, press button again whilst LED flashes.
- 26.) To test the intercom, press the intercom button on any unit (other than in-lift-car). Speech will be transmitted to all units (on this lift), except the Fireman's intercom.
- 27.) Test the Fireman's mode by switching on the Fireman's Switch. Speech will be transmitted to the lift car, motor room and Fireman's units. This will over-ride all other communication.



For multiple lifts, follow steps 3-19 to install each lift and test units following steps 22 to 27

Program-

Programming new telephone numbers is done by the engineer using a touch tone telephone or mobile telephone, simply follow the prompts



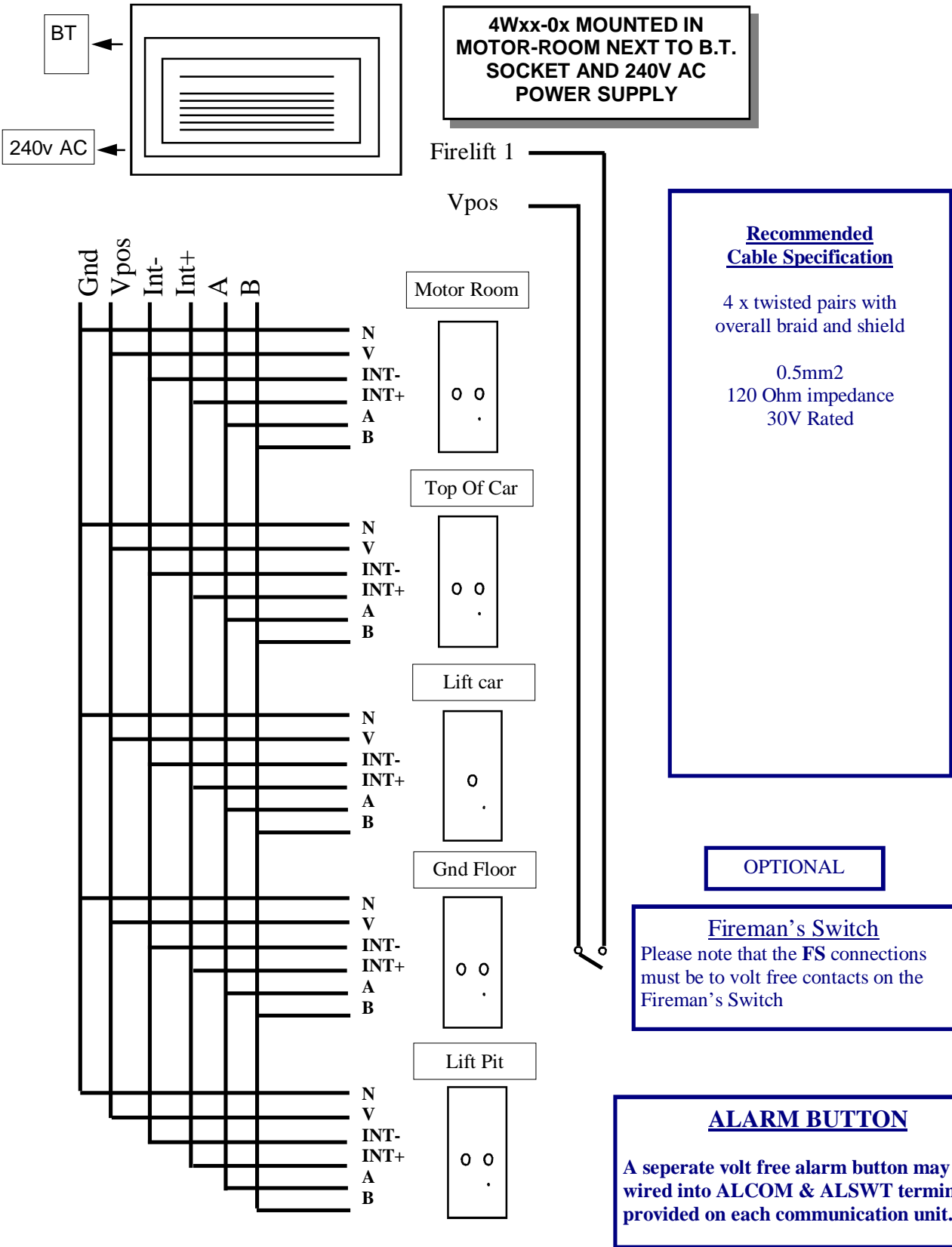
Tel: 01244 550012

Fax: 01244 549482



Version Number : 1	Drawn By : MB	Title : Six Wire Autodialler Installation Instructions
Version Date : 11/05/04		File : 485 Autodialler Installation Diagram With Speech.pub

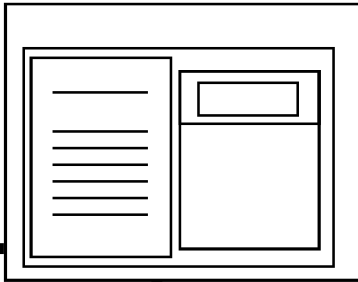
AUTODIALLER CONNECTION DIAGRAM



Version Number : 1	Drawn By : MB	Title : Six Wire Autodialler Installation Instructions
Version Date : 12/05/04		File : 485 Autodialler Installation Diagram With Speech.pub

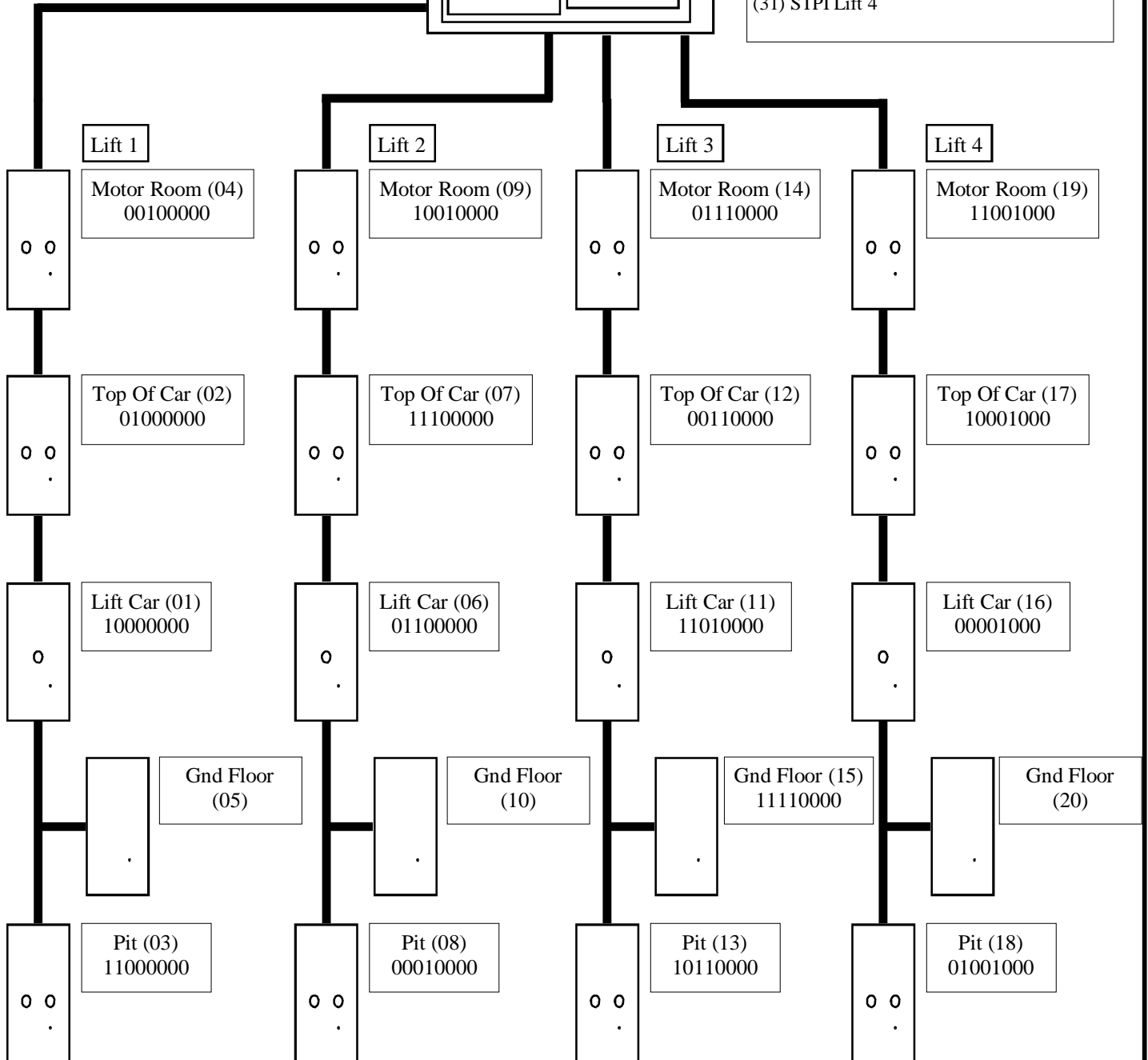
AUTODIALLER INTERCOM ADDRESS SET UP DIAGRAM

Each intercom unit connected to the auto-dialler requires an individual address to be set on the intercom DIP switch.
Below are the addresses for each station on a full four lift with ground floor/Fireman's intercom autodialler system.



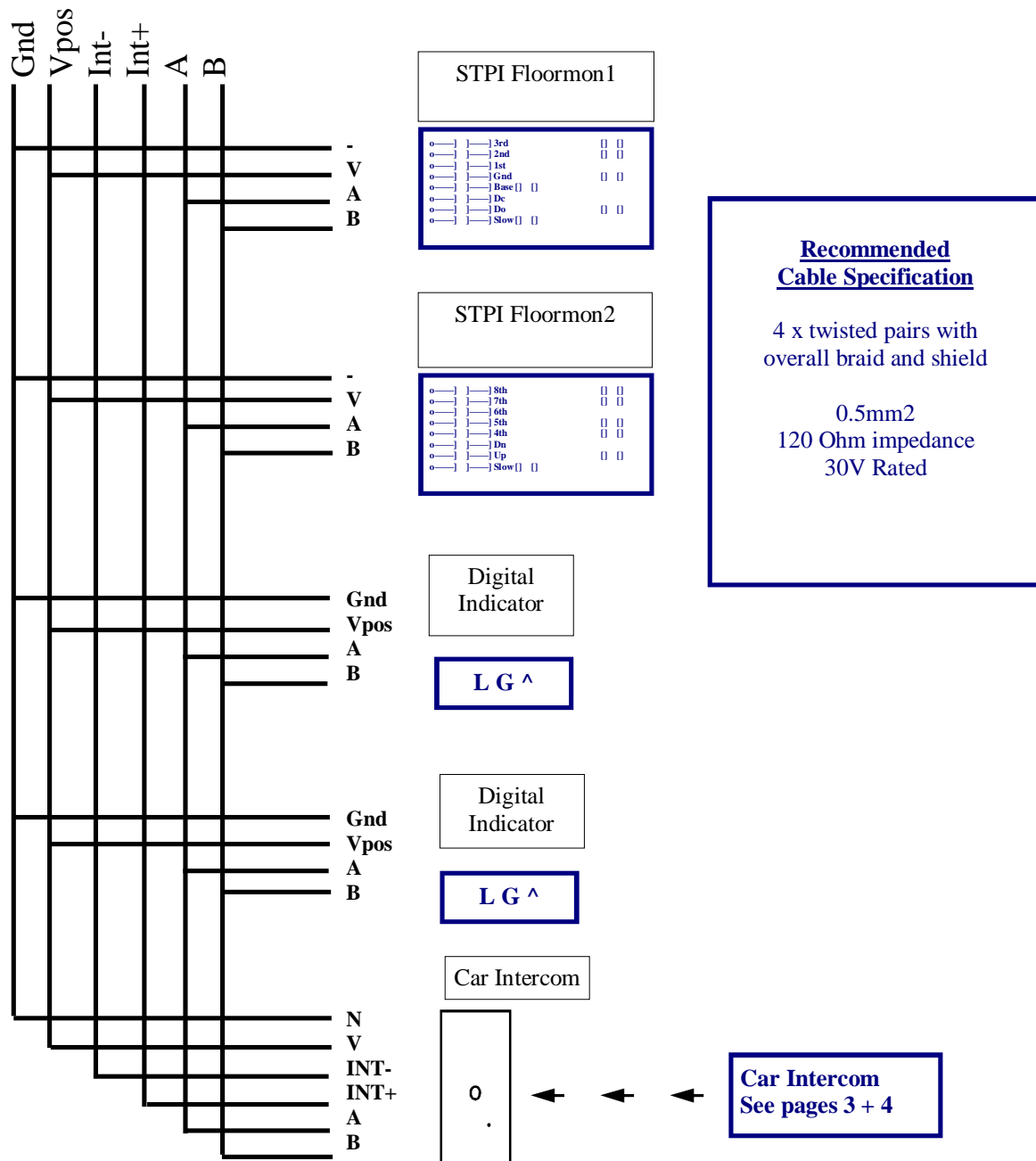
The system can accommodate up to 4 STPI / FLOOR MONITOR units, one for each lift, and a programmer unit. These are pre-set and are designated as follows :

- (27) Programmer
- (28) STPI Lift 1
- (29) STPI Lift 2
- (30) STPI Lift 3
- (31) STPI Lift 4



Version Number : 1	Drawn By : MB	Title : Four Wire Autodialler Installation Instructions
Version Date : 11/05/04		File : Four Wire Autodialler Installation Diagram With Speech.pub

Six Wire Digital Indicator & Speech Unit Installation Diagram





485 Six Wire Cable Specification

RECOMMENDED CABLE TYPES

POWER & AUDIO (4 Core 0.75mm²)

N	[POWER -VE]	0.75mm ²
V	[POWER +VE]	0.75mm ²
-	[AUDIO -VE]	0.75mm ²
+	[AUDIO +VE]	0.75mm ²

DATA COMMUNICATIONS (Cat5)

A B	[DATA A,B]	Cat5 'Twisted pair'
-----	------------	---------------------

As can be seen, 2 Separate cables are used to minimise induced interference.

They should be kept as far away as possible from any source of interference, in particular noisy wiring, such as inverter / fluorescent type wiring

We recommend the use of screened cables in excessively noise installations. The screen should be continuous throughout and terminated only at the main control box/power supply

Version Number : 1	Drawn By : MB	Title : 485 Six Wire Console Installation Instructions
Version Date : 07/06/05	TEL : 01244 -550012	File : 6 Wire Console Diagram.pub

O L+ (3rd)
O L+ (2nd)
O L+ (1st)
O L+ (Gnd)
O L+ (Base)
O L+ (Dc)
O L+ (Do)
O L+ (Slow)

STPI Floormon1

o—	—	8th		0	0
o—	—	7th		0	0
o—	—	6th			
o—	—	5th		0	0
o—	—	4th		0	0
o—	—	Dn			
o—	—	Up		0	0
o—	—	Slow[]	0		

STPI Floormon2